



Single room  
heating and  
ventilation unit  
with heat and  
moisture recovery

[www.xvent.cz](http://www.xvent.cz)

**2in1**

**XROOM**

Beauty in simplicity

# Unique solution electric or water exchanger recovery exchanger of heat and moisture easy installation design fits in to each interior available in two sizes

...is unique product containing **ventilation unit and heating unit in one**. Both systems work independently.

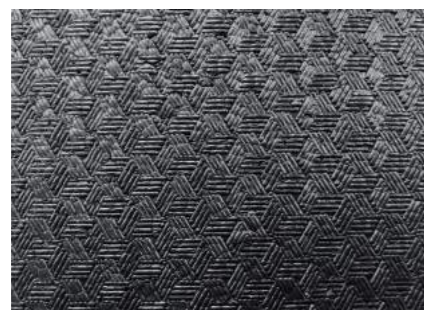
**Xroom** is manufactured in two sizes **Xroom 100** and **Xroom 250**. These units have wide range of usage in commercial and residential sector f.a. : in hotels, offices, schools, hospitals, apartments, family houses, ...

**Xroom is very silent.**

The unit matches **Energy class A+**

The unit comes with **CO<sub>2</sub>** sensor as standard and enables also **RH** and **Radon** sensors.

Removable **front cover** secured by screws. Available in flat white or anthracite color.



Body of the unit is made from black **EPP**. (expanded polypropylene).



**Water exchanger** is controlled by thermostatic water valve.  
**Electric exchanger** is controlled by controls of the unit.

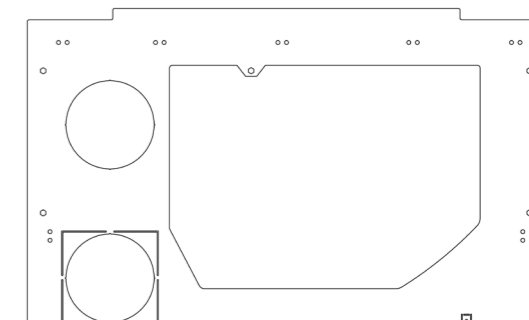
**EPP filter covers**

Two types of recovery exchangers. **Heat recovery** or **heat and moisture recovery**.

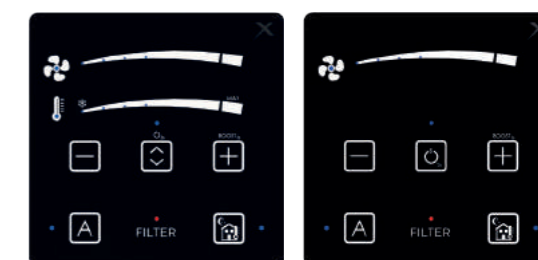
**Pleated filters** are easy accessible. Unit comes with filters class **M5**. Filters class **F7** are available as accessories.

**Filter reset button**

**Metal template** enables easy installation. It ensures correct position for drilling of the holes for intake and exhaust and it is also used for hanging of the unit to the wall.



**Integrated controls** is used for airflow management, heating performance and switching of the operation modes.

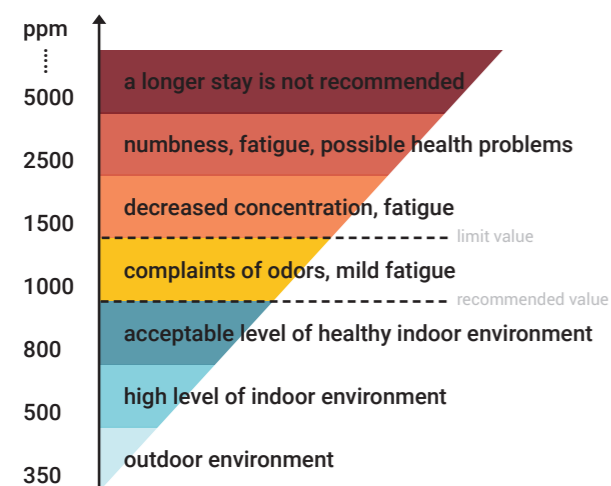


# 2in1 Xroom - ventilation and heating in one



**Xroom** is designed to be ventilation unit and the heating unit as well. The **ventilation operation** and the **heating operation** works independently one on each other. This means, that during ventilation request the heating does not have to work and oppositely. Both systems can operate at same time as well. The water and electric heater do not operate as the post heaters only, they operate as solid-regular air heaters.

...Xroom unit 2in1 can replace the radiator (or electric convector) and save the space...

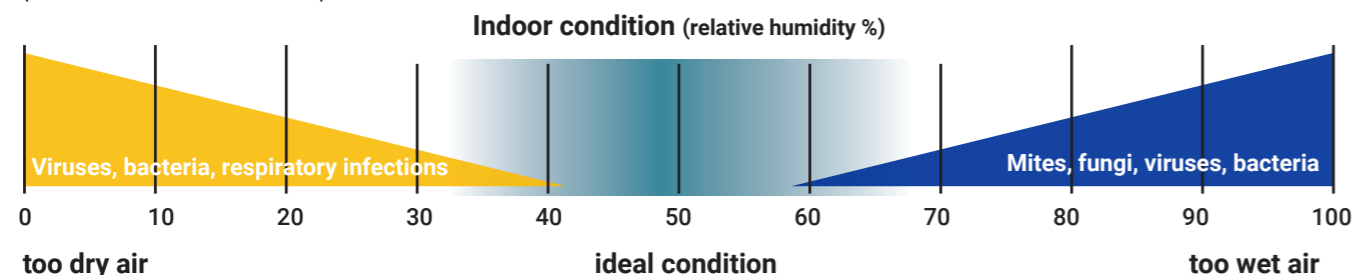


## Effect CO<sub>2</sub> on human - CO<sub>2</sub> sensor in standard - simple solution

Sensors enable **automatic operation** of the unit. The unit operates only, when the inside quality of the air is worse than requested. When fulfilling the air quality request, such a solution generate only minimum ventilation **costs in the real operations!** This also means lower operation costs and faster paid back of the investment to ventilation unit purchase...

## Effect of relative moisture of air on human - enthalpy regeneration

**Enthalpic regeneration (ERV)** means backwards gaining of the moisture from the extract air. The supplied air is so dry in the winter, that it can reduce the indoor relative humidity in the air below 20%. Such a low relative humidity cause drying-off the skin, mucous membrane and wood-made furniture and floors. Dry mucous membrane makes breathing less comfortable and cause respiratory diseases. Dehydration of the skin makes wrinkles and the drying-off the wood can damage furniture or floors. Ideal relative humidity inside should be around 50%. The solution is usage of **Enthalpic Recovery Exchanger** (Xvent recommends)



## Technical parameters

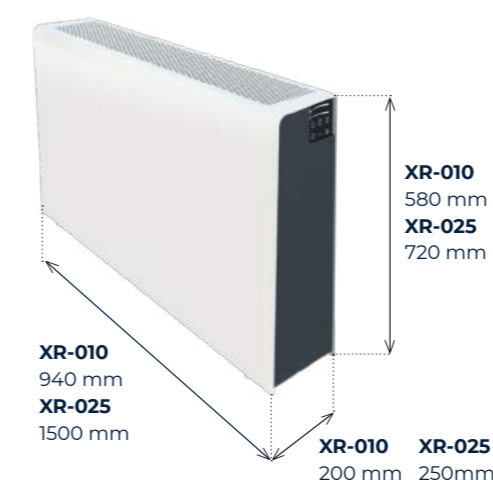
XROOM-100		XR1-010-ECS0..X...		XR1-010-ECV1..X...		XR1-010-ECE1..X...		XR1-010-ECS0..P...		XR1-010-ECV1..P...		XR1-010-ECE1..P...		
Type of recovery exchanger		HRV	ERV	HRV	ERV	HRV	ERV	HRV	ERV	HRV	ERV	HRV	ERV	
Unit equipment	preheater	-		-		-		electric ( 0,27kW)						
	heating	-		water		electric		-		water		electric		
Nominal heating output / boost*		m3/h	100 / 215 (HRV) , 90 / 205 (ERV)											
Heating output range**		kW	-		0,33 - 1,38		0,5		--		0,33 - 1,38		0,5	
Noise level***		dB (A)	32,1											
Weight****		kg	16,3		18,3		19,3		16,8		18,8		19,8	
Volume of water in the exchanger		l	-		0,51		-		-		0,51		-	
Power supply		V/Hz	1 ~ 230 / 50-60											
Nominal power input / boost*		W	30 / 167		30 / 165		530 / 667		300 / 437		300 / 437		800 / 937	
Nominal current / boost*		A	0,3 / 1,32		0,3 / 1,32		2,5 / 3,5		1,5 / 2,5		1,5 / 2,5		3,7 / 4,7	
Recovery efficiency EN308	heat	%	87	90	87	90	87	90	87	90	87	90	87	90
	moisture	%	-	85	-	85	-	85	-	85	-	85	-	85
Protection		IP	20											
Energy efficiency class (SEC)		-	cold climate A+ (-47 HRV, -45,9 ERV) ; medium climate A (-40,4 HRV, -38,9 ERV) ; warm climate A (-34,1 HRV), warm climate B(-33,1 ERV)											

XROOM-250			XR1-025-ECS0..X...		XR1-025-ECV1..X...		XR1-025-ECE1..X...		XR1-025-ECS0..P...		XR1-025-ECV1..P...		XR1-025-ECE1..P...	
Type of recovery exchanger			HRV	ERV	HRV	ERV	HRV	ERV	HRV	ERV	HRV	ERV	HRV	ERV
Unit equipment	preheater		-		-		-		electric ( 0,54kW)					
	heating		-		water		electric		-		water		electric	
Nominal heating output / boost*		m3/h	250/ 350 (HRV) , 240 / 335 (ERV)											
Heating output range**		kW	-		1,34 - 3,49		1		--		1,34 - 3,49		1	
Noise level***		dB (A)	32,6											
Weight****		kg	36		39,4		41,2		37		40,4		42,2	
Volume of water in the exchanger		l	-		1,17		-		-		1,17		-	
Power supply		V/Hz	1 ~ 230 / 50-60											
Nominal power input / boost*		W	61 / 169		61 / 169		1061 / 1169		479 / 709		480 / 709		1480 / 1709	
Nominal current / boost*		A	061 / 1,42		0,61 / 1,42		5 / 5,8		3 / 3,8		3 / 3,8		7,3 / 8,2	
Recovery efficiency EN308	heat	%	87	86	87	86	87	86	87	86	87	86	87	86
	moisture	%	-	75	-	75	-	75	-	75	-	75	-	75
Protection		IP	20											
Energy efficiency class (SEC)		-	cold climate A+ (-47,5 HRV, -47,2 ERV) ; medium climate A (-40,5 HRV, -40,2 ERV) ; warm climate A (-34,6 HRV, -34,4 ERV)											

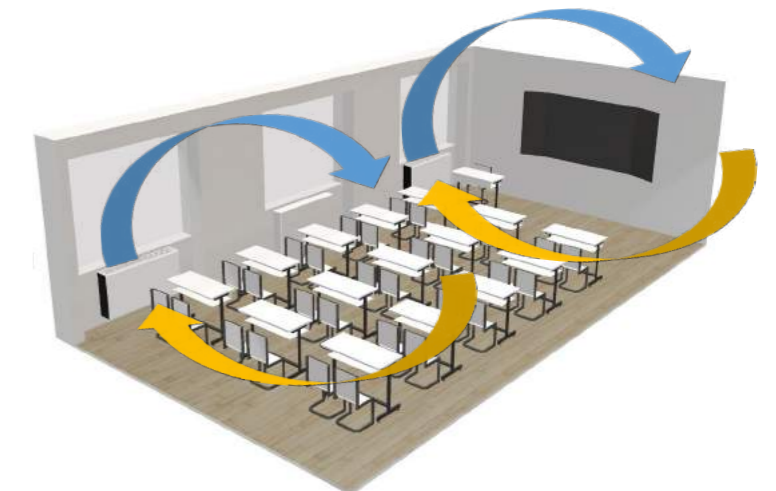
\* BOOST(intensive ventilation - 10min),  
\*\* water temperature 75/60°C, inlet air temperature 20°C,  
\*\*\* sound pressure level in 3m (free space),  
\*\*\*\* unit weight (without water and packaging)



## Basic dimensions



## Room ventilation scheme



**In offices...**  
...for higher productivity...



**In living rooms...**  
...for better air quality...



**In schools...**  
...for better concentration...



**In hospitals...**  
...fresh air without opening windows...



**In hotels...**  
...for healthier sleep...



**Xvent** |

Beauty in simplicity

**+420 467 070 233**  
**office@xvent.cz**

Xvent s.r.o.  
Poděbradská 289  
53009 Pardubice  
Czech Republic

[www.xvent.cz](http://www.xvent.cz)